

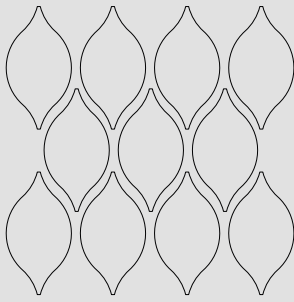
RE:FELT

PRODUCT SHEET



SET OF 11 PET FELT TILES LEAF PLAIN

PRODUCT OVERVIEW



- Made from recycled plastic bottles
- High-end finish with a bevel-cut
- Compatible with Leaf Veins
- Sound-dampening effect
- Easy to mount on the wall
- Impact-resistant
- Sold in sets of 11 tiles

Material	PET Felt
Size	263 x 496 x 9 mm
Weight per set	1.6 kg
Reaction to fire classification	B-s1, d0

PET FELT TILES LEAF PLAIN

The fresh and poppy look of Leaf can't go unnoticed. These elegant, nature-inspired tiles offer a great alternative to traditional acoustic solutions. The tiles have a gently bevelled edge and a handy size, allowing to easily create the most intriguing wall patterns. Combine plain tiles with Leaf Veins to double your design options.

PET FELT

PET Felt is a sustainable and durable material made from recycled plastic bottles. Thanks to its open-cellular structure, PET Felt demonstrates great acoustic properties. PET Felt panels are soft to touch, impact-resistant and easy to process.

COLOURS



Since PET Felt is a recycled material, slight colour deviations may occur between different batches. It is recommended to order the required quantity at once to make sure the tiles come from the same batch.

DOWNLOADS

3D files, care & maintenance recommendations and installation guides are available at refelt.com

AVAILABLE IN 28 COLOUR BLENDS



Dark Blue



Dark Green



Green



Lime



Cobalt



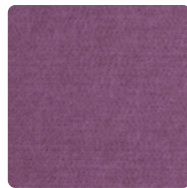
Denim



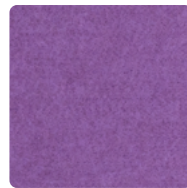
Blue



Sky



Grape



Violet



Frost



Smoke



Black



Dark Grey



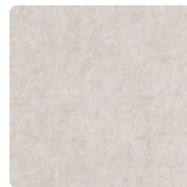
Grey



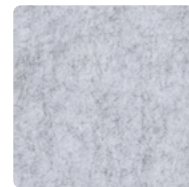
Light Grey



Sand



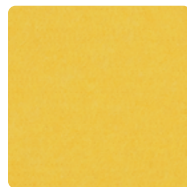
Beige



Marble



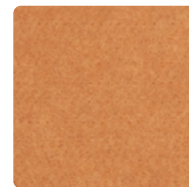
White



Yellow



Orange



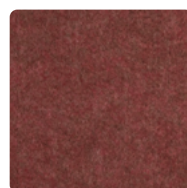
Honey



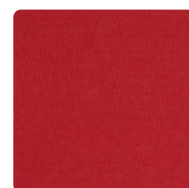
Camel



Coconut



Wine



Red



Cinnamon