

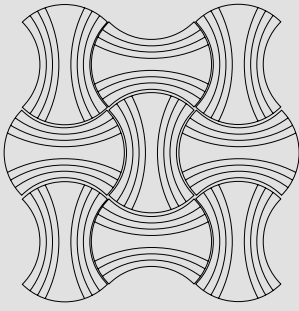
RE:FELT

PRODUCT SHEET



SET OF 9 PET FELT TILES FLUX LINES

PRODUCT OVERVIEW



- Made from recycled plastic bottles
- High-end finish with a bevel-cut
- Compatible with Flux Plain
- Sound-dampening effect
- Easy to mount on the wall
- Impact-resistant
- Sold in sets of 9 tiles

Material	PET Felt
Size	344 x 487 x 9 mm
Weight per set	1.98 kg
Reaction to fire classification	B-s1, d0

PET FELT TILES FLUX LINES

The elegant shape of Flux tiles creates the most intriguing wavy patterns. Tileable in different directions and easy to mount on the wall, Flux offers a universal solution to improve both acoustics and aesthetics of your interior. Its gently bevelled edges and v-cut grooves create a special 3D effect. Combine Flux Lines with plain tiles to double your design options.

PET FELT

PET Felt is a sustainable and durable material made from recycled plastic bottles. Thanks to its open-cellular structure, PET Felt demonstrates great acoustic properties. PET Felt panels are soft to touch, impact-resistant and easy to process.

COLOURS

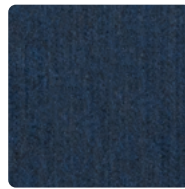


Since PET Felt is a recycled material, slight colour deviations may occur between different batches. It is recommended to order the required quantity at once to make sure the tiles come from the same batch.

DOWNLOADS

3D files, care & maintenance recommendations and installation guides are available at refelt.com

AVAILABLE IN 28 COLOUR BLENDS



Dark Blue



Dark Green



Green



Lime



Cobalt



Denim



Blue



Sky



Grape



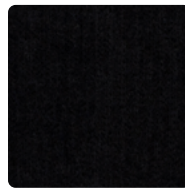
Violet



Frost



Smoke



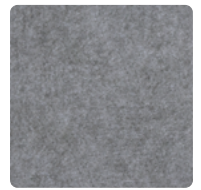
Black



Dark Grey



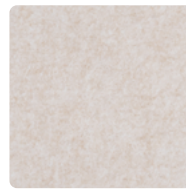
Grey



Light Grey



Sand



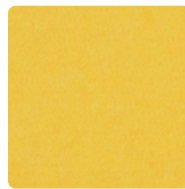
Beige



Marble



White



Yellow



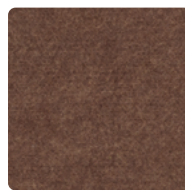
Orange



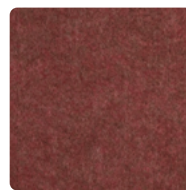
Honey



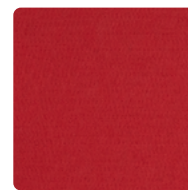
Camel



Coconut



Wine



Red



Cinnamon